



# MONTHLY MEMBERSHIP PROGRESS REPORT

District 11 B2

Results as of: 5/31/2015

GMT: THOMAS MATNEY

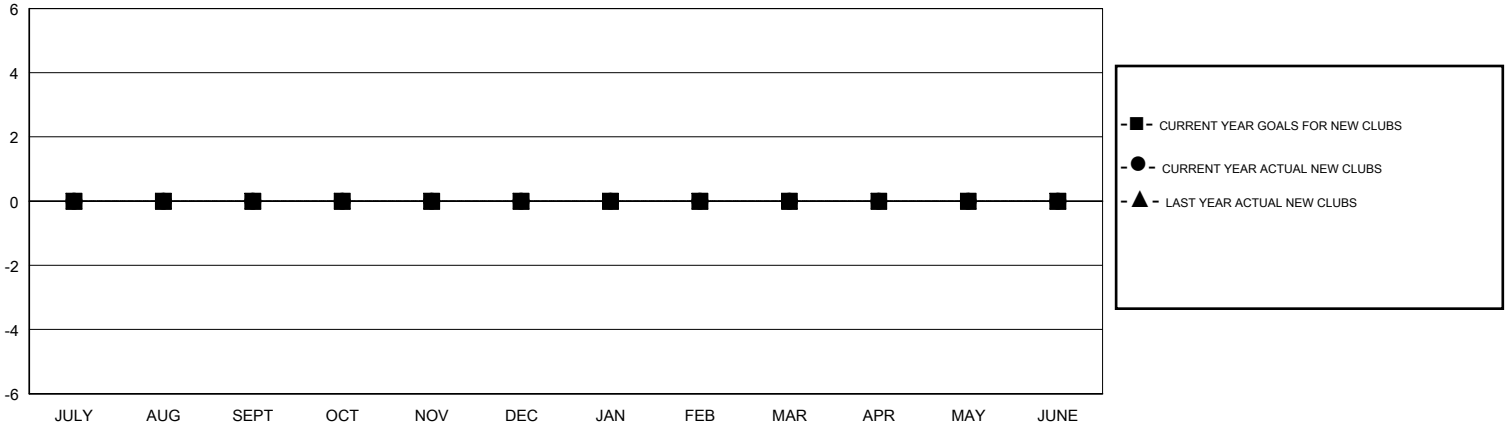
LOCATION MICHIGAN

GMT CA 1

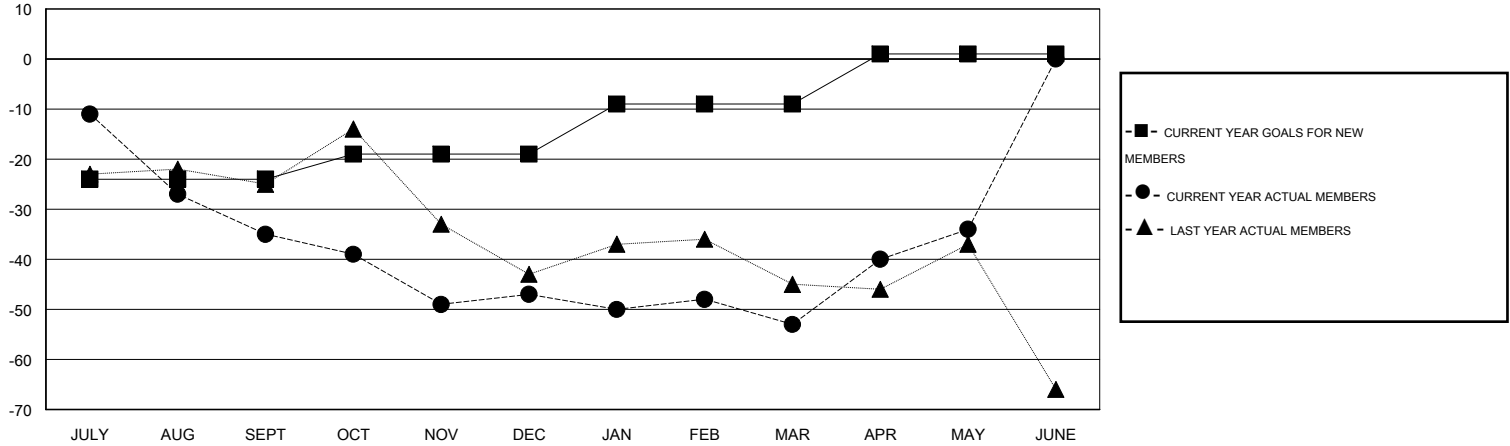
Clubs				
RESULTS FOR 2014-2015				
QUARTER	NEW CLUB GOAL	NEW CLUBS	DROPPED CLUBS	NET GAIN/LOSS
JULY/AUG/SEPT	0	0	1	-1
OCT/NOV/DEC	0	0	0	0
JAN/FEB/MAR	0	0	0	0
APR/MAY/JUNE	0	0	0	0

Members				
RESULTS FOR 2014-2015				
QUARTER	NEW MEMBER GOAL	CHARTER AND NEW MEMBERS ADDED	DROPPED MEMBERS	NET GAIN/LOSS
JULY/AUG/SEPT	-24	9	44	-35
OCT/NOV/DEC	5	18	30	-12
JAN/FEB/MAR	10	30	36	-6
APR/MAY/JUNE	10	39	20	19

GOALS AND ACTUAL NEW CLUBS CUMULATIVE



GOALS AND ACTUAL MEMBERS CUMULATIVE



DROPPED CLUBS: 1
------------------

22 CLUBS OF 41 ADDED 1 OR MORE NEW MEMBERS

GENDER DISTRIBUTION	
MALE	735 (70.81%)
FEMALE	303 (29.19%)

DROPPED MEMBERS	
DECEASED	15
CLUB CANCELLED	0
OTHER	115
<b>TOTAL</b>	<b>130</b>

[CLICK HERE FOR HEALTH ASSESSMENT DATA](#)

FAMILY UNIT MEMBERS	229
HEAD OF HOUSEHOLD	113
NON-HEAD OF HOUSEHOLD	116